

MODERN LUXURY

# Interiors

SOUTH FLORIDA



## COLOR YOUR WORLD

A FULL SPECTRUM TO INSPIRE

**PLUS**

VIBRANT CHARACTERS ANTROBUS + RAMIREZ, IRIS APPEL, BROWN DAVIS, KIT KEMP, INDIA MAHDAVI, PHYLLIS TAYLOR, ALEXANDRA VON FURSTENBERG & MORE

@MLINTERIORSSOUTHFLORIDA  
MODERNLUXURY.COM  
BY THE PUBLISHERS OF MIAMI MAGAZINE

1 Treillage garden stool (\$395, scenariohome.com) 2 Artefacto's Chiara swivel chair returns to its original position after each use (\$2,700, artefacto.com). 3 The belted Bond ottoman from Morada (\$2,950, morada-furniture.com) 4 Citrouille two-tone suede throw pillow from Mitchell Gold + Bob Williams (\$495, mgbwhome.com) 5 Skram Furniture's Lineground Lowdown media unit, in cherry wood (\$7,615, skramfurniture.com)

1



2



3



## Tangerine Dreams

Palm Beach designer **Gil Walsh** (gilwalsh.com) created the ultimate seaside getaway using classical beach and nautical motifs in fresh, modern applications. While the envelope is overwhelmingly crisp and white for maximum airiness, punches of strong color abound, creating bold, graphic statements. The inspiration for this scheme started with the orange accent chairs that Walsh's client discovered in a flea market. Both client and designer found the color refreshing and energizing, so a lamp from Mecox, a bowl from Home Goods and accent pillows created by Walsh swiftly followed. A dog sculpture, from the client's private collection, oversees the citrusy room.

4



5



Gil Walsh of Gil Walsh Interiors devised a conversational seating arrangement to contrast with the sea view.



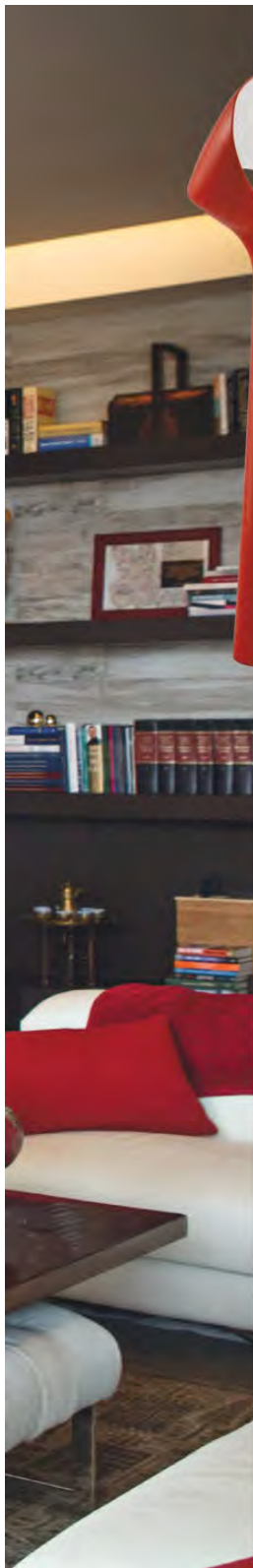


PHOTO BY BRETT AUZINGER

Miami-based designer  
Phyllis Taylor in the  
home of Donna  
Shalala, where Tibetan  
musical instruments  
sourced from Jalan  
Jalan (jalanmiami.com)  
are placed throughout



PHOTO BY MIKE BUTLER



1

1 Roche-Bobois' Nonette lamp (\$1,695, roche-bobois.com) 2 Kakar House of Design's cotton and wool Bold Coral Floral rug (\$899, kakarhouseofdesign.com) 3 Embryo chair from Cappellini (\$4,394, luminaire.com) 4 Artefacto's Constantin bedside table, with drawers lined in Suede Madri Paprika (\$6,500, artefacto.com) 5 Shiro Kuramata's 20-drawer revolving cabinet dates from 1970 (\$3,029, luminaire.com).



2

## Lady in Red

Donna Shalala's love of red is on full display in her Coral Gables condo, and her color preference harks back to her stint in the Peace Corps, where her appreciation for the crafts of indigenous tribes was born. The former United States secretary of health and human services and president of the University of Miami worked with Phyllis Taylor, principal of **Taylor & Taylor** (taylorntaylor.com), to create a multilayered space to house mementos of a storied career—and new finds to complement those rosy artifacts. A Peter Poulin chair, Japanese wood stacking seats and an Italian midcentury glass vase—all red—nod to the variety of primitive pieces Shalala has acquired throughout her life.



3

4



5

