

# BLACKMAN AT HOME

WINTER 2017

**WARM IN  
WINTER**  
HELPFUL HINTS  
FOR HOME  
HEATING

**PRIVATE ISLAND**  
NAUTICAL STYLE  
IN THE FLORIDA  
KEYS

## ON TREND

Design direction for 2017

+

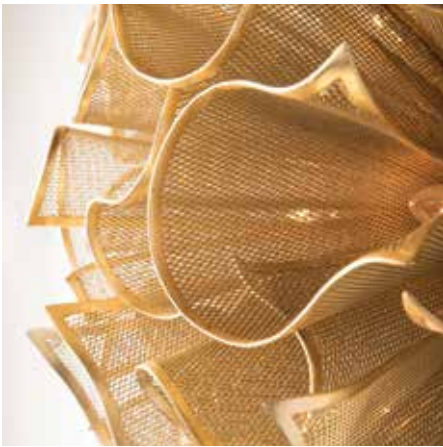
THE LATEST IN OUTDOOR HEAT SOURCES,  
FIREPLACES, STEAM SHOWERS AND MORE

**BLACKMAN®**



VARIETY IS THE  
SPICE OF LIGHT.

**Three brands.  
Endless possibilities.**



Lighting artistry and design from Hudson Valley Lighting®, Troy Lighting and Corbett Lighting. From dramatic, fashion-forward pendants to elegant chandeliers and sconces, each brand offers its own design aesthetic to suit any style or taste.



[WWW.HUDSONVALLEYLIGHTING.COM](http://WWW.HUDSONVALLEYLIGHTING.COM)



[WWW.TROY-LIGHTING.COM](http://WWW.TROY-LIGHTING.COM)



[WWW.CORBETTLIGHTING.COM](http://WWW.CORBETTLIGHTING.COM)

[WWW.LITTMANBRANDS.COM](http://WWW.LITTMANBRANDS.COM)

# A SINK THAT REALLY WORKS

A sink that really works.  
A workspace that really entertains.

For those who are truly inspired by cuisine, the kitchen is the center of your home. And the center of the kitchen is where you work, share and entertain. With the Chef Center, Franke brings open-concept and multi-functional living to the most basic necessity in your kitchen: the sink.

Discover the Chef Center at [franke.us/ks](http://franke.us/ks)



Chef Center CUX11024-W sink  
Chillout FF4900 faucet

MAKE IT WONDERFUL





Photograph by Lauren Hagerstrom



# CWIDDESIGN

design. textiles. homeware.

917.809.6675  
[creativewallcoverings.com](http://creativewallcoverings.com)

SERVING  
NY | NJ | PA | CT

# BLACKMAN AT HOME



A home should be a reflection of those who enjoy living in it. Creating distinctive environments for our clients that decipher each individual's tastes and needs is our

mission and what we strive to accomplish in our Blackman showrooms. We encounter so much inspirational design in our travels to trade shows and beyond — the remarkable hammock tub on our cover is a perfect example — and we work each day to share that inspiration with you.

Our showrooms will continue to evolve — bringing our clientele all that is trendsetting and innovative in the United States, as well as from abroad. Technology continues its integration into the home as we now have hands-free faucets and showering systems with digital temperature settings, steam and pressure options, as well as state-of-the-art sound systems. Even a toilet is no longer just a toilet but also incorporates a bidet with multiple settings and hand held controls. There is more on the horizon and, with my finger on the pulse, I will bring all that is cutting edge to you!

Within the following pages of Blackman at Home we bring you the style trends we see having influence in the coming year and a host of products to illustrate them, great tips for entertaining in the winter season, color trend predictions for 2017 from our friends at Sherwin-Williams, ideas for creating your own spa-like steam shower at home and more.

For those of us in the Northeast, we spoke with industry leaders to provide tips for winterizing your home and, to celebrate our latest showroom, in spectacular West Palm Beach, we've put a special focus on design projects that showcase the beauty and creativity at large in the Sunshine State.

We hope you enjoy this issue and look forward to bringing you more great design and inspiration in the future.

David Lyon  
Vice President Retail Division



**Publisher**  
Steven Mandel

**Ad Sales**  
Sophia Koutsiaftis  
Alan Wolfe

**Administration**  
Valerie Mangan

**Blackman Marketing**  
Dina Bolger  
Brandon Markowitz

**Editor**  
Jennifer Quail

**Layout & Design**  
Gregory Cullen

**Contributing Writers**  
Jessica Harlan  
Michele Keith  
Tyler Wisler

BLACKMAN AT HOME magazine is a production of ASPIRE One Communications, Inc. Any reproduction of or re-use of the articles, images and content without written consent from ASPIRE One Communications, Inc. is strictly prohibited.  
ASPIRE One Communications, Inc.  
246 Main Street, Cornwall, NY 12518  
©2017 All Rights Reserved.



THE BOLD LOOK  
OF **KOHLER**®

# Features

**WELCOME**  
**BLACKMAN ON THE MOVE**  
**FINAL WORD**

4  
10  
80

SW 9101

SW 9113

SW 6774

FRESHWATER

SW 7675

SEALSKIN

SW 6683

BEE

## TRENDS 2017

The materials  
and motifs that will  
guide the year

# 12-39

### 14

**Rustic+  
Refined**  
An aged edge  
lends casual  
sophistication

### 16

**Texture**  
Fantastic  
finishes for  
surfaces of  
all kinds

### 18

**Opulent  
Accents**  
A little glamour  
takes the home  
to new heights

### 20

**Mixed  
Media**  
Blending  
materials for  
unique style

### 24

**NeoCon**  
The premier  
place for  
design  
beyond the  
home

### 28

**Outdoor  
Light & Heat**  
Products  
to extend  
the outdoor  
season

### 32

**Fireplaces**  
Hearth style  
for differing  
tastes

### 34

**Color**  
Four palettes  
for the colorful  
year ahead

### 38

**Steam  
Showers**  
Get the spa  
treatment  
at home



On the cover: Hammock Bath by SplinterWorks. Photo: Alberto Coronel



# 40

## HOME HEATING

Keep warm all winter long



# 48

## WINTER ENTERTAINING

Dishes and tips for hosting



# 52

## DESIGN NY/UNITED NATIONS

A calming palette in the busy city



# 56

## BUILDER PROFILE

Fine homes from the Hamptons to Palm Beach



# 62

## DESIGN FLORIDA/ THE KEYS

Nautical luxury on a private island



# 68

## POPSICLES

Perfect treats for any season



# 72

## DESIGN FLORIDA/ SOUTH BEACH

Contemporary beachfront style





## Fresh picked sink colors.

Now Elkay® Quartz sinks beautify kitchens with the most color options available anywhere. Choose from 16 bold colors made from durable natural quartz and acrylic resins. With your creativity and Elkay ingenuity, the possibilities are endless. Learn more at [elkay.com/quartz](http://elkay.com/quartz).

**ELKAY**  
Quartz

# WELCOME TO THE UNEXPECTED. WELCOME TO ROBERN.

MIRRORS • VANITIES & TOPS • MEDICINE CABINETS • LIGHTING



## WARM MODERNISM

Your everyday routine should never feel ordinary. It is our mission to craft mirrors, vanities, medicine cabinets and lighting options that are beyond the expected. Beyond the day-to-day. To blend thoughtful design, innovative technology and quality materials into products that will transform your look and reflect your style.

**DISCOVER WHAT ROBERN CAN DO FOR YOU**

**robern.**

Visit us at [robern.com](http://robern.com)  
1-800-877-2376

**TREND | NATURE**  
**DESIGNER | JOHN LUM**

John Lum, AIA, and principal architect at John Lum Architecture (JLA), owns a 17-person residential architecture and commercial interiors firm in San Francisco.

Since founding the firm in 1994, John has developed a signature "warm modernist" design style. The modern bathroom pictured above reflects Lum's style with its open view of the outdoors, natural themes and inviting Robern® products.

©2017 by Robern, Inc

ON THE MOVE

# Grand Opening: Lakewood Showroom

*At the end of November, Blackman* christened its latest showroom in Lakewood, NJ. The grand opening event welcomed members of the Chamber of Commerce; the mayor, who participated in the official ribbon cutting ceremony; and, of course, designers and design professionals from the area.

"We had an immediate business response to the opening," says David Lyon, vice president of retail for Blackman. "There was an absolute need for a decorative showroom of this level in the area."

The 7,000 square foot showroom includes tile, lighting and the great kitchen and bath brands Blackman brings to its clients, including Kohler, Toto, American Standard and more. ■



Photo credit: Alberto Coronel

# Colormix 2017

A crowd of 75 design professionals gathered in Blackman's Mahwah, NJ, showroom for Colormix 2017, a special presentation from Sherwin-Williams on the color trends that will guide the year. Our partners in this CEU event, Sherwin-Williams flipped over the showroom, turning it into a color classroom to the benefit of all who attended. The lively evening brought in dedicated clients and new designers as well and was a terrific networking experience for all. ■



Photo credit:

## Latest Location: West Palm Beach

On sunnier shores, Blackman has opened the doors to its 8,000 square foot showroom in West Palm Beach with an official grand opening event planned for late January.

Nestled at the foot of the bridge that connects the neighborhood to Palm Beach, the showroom's sweeping windows provide

an enticing view for passers by on foot or in their vehicles.

"It's an amazing location and we have a great staff of industry specialists in place," says David Lyon, vice president of retail for Blackman. "This is an ideal location for us and we are very excited to welcome the design talent in the area."

The West Palm Beach location includes tile, lighting and plumbing fixtures; features a full Kallista showroom; and also welcomes Ann Sachs Tile & Stone, for whom Blackman is the exclusive vendor in the area.

Look for photos of this amazing new location in the next issue of Blackman at Home! ■

Photo credit: Alberto Coronel

# Up Next...

## BLACKMAN

- At press time, Blackman was on the hunt at KBIS (The Kitchen & Bath Industry Show) for the latest design trends and products to bring into its growing roster of showrooms.
- In March, Blackman heads to Frankfurt, Germany, for ISH Fair; an international event that will provide clues as to what we'll be seeing with regard to design in the states in a couple years.
- Blackman has begun a new partnership with Christie's real estate affiliate Special Properties and will be hosting an event with the group this spring. Blackman is very excited for this new partnership noting, "their customers are our customers; it will be a great working relationship."
- Blackman Outdoors will continue to expand in all locations. Visitors to the West Palm Beach showroom will see a major focus on outdoor living in the coming months. ■



## HOME TRENDS 2017

We've scoured the market for the products and finishes that will feature in interiors this year and hold their worth in years to come. From the kitchen to the bath and beyond, these goods will steep your home in style.

Pure Freude  
an Wasser

**GROHE**  
WAVE

# TRUE SQUARE DESIGN

GROHE EUROCUBE®



The new GROHE Eurocube® exudes architectural appeal with cutting-edge, geometric styling and quality professional features that seamlessly blend together to combine superior functionality with a uniquely cubic design. [www.grohe.com/us](http://www.grohe.com/us)

# Rustic+ Refined

Troy Lighting's Rise & Shine design is a weathered industrial pendant formed from hand-worked iron with a rust patina finish.



Bronzed and burnished, rustic and relevant, adding an aged edge to the home has never been more stylish. As lifestyles have increasingly turned away from the pristine and formal, the beauty in these designs is how they blur the lines between casual and sophisticated.



There's a nod to the past and to craftsmanship, to the farmhouse and the factory in these pieces that can stand alone as a statement or marry with antiques and artifacts of all kinds to complete an overall motif.

Reimagining the record console of decades past, the Standard One Stereo Console from Wrensilva offers a handcrafted, modern home for your favorite analog music.



A copper tone and traditional styling pair with graceful lines to make the Bacchus faucet by Kallista a go-to for farmhouse styled kitchens and beyond.

An aged brass finish lends character to Hudson Valley's Garden City wall sconce.



Paired with a Watermark faucet, Stone Forest's clever take on the pedestal sink is industrial, rustic and modern in one.



Seashells never had it so good. Hand-laid concentric circles of naturally colored shells adorn this mirror by Currey & Company and surround the center with an ocean-inspired glow.

# Fantastic Finishes

The brick patterning of Gayaforest's tile, shown in Almond, gains extra depth with the use of varying textured patterns.

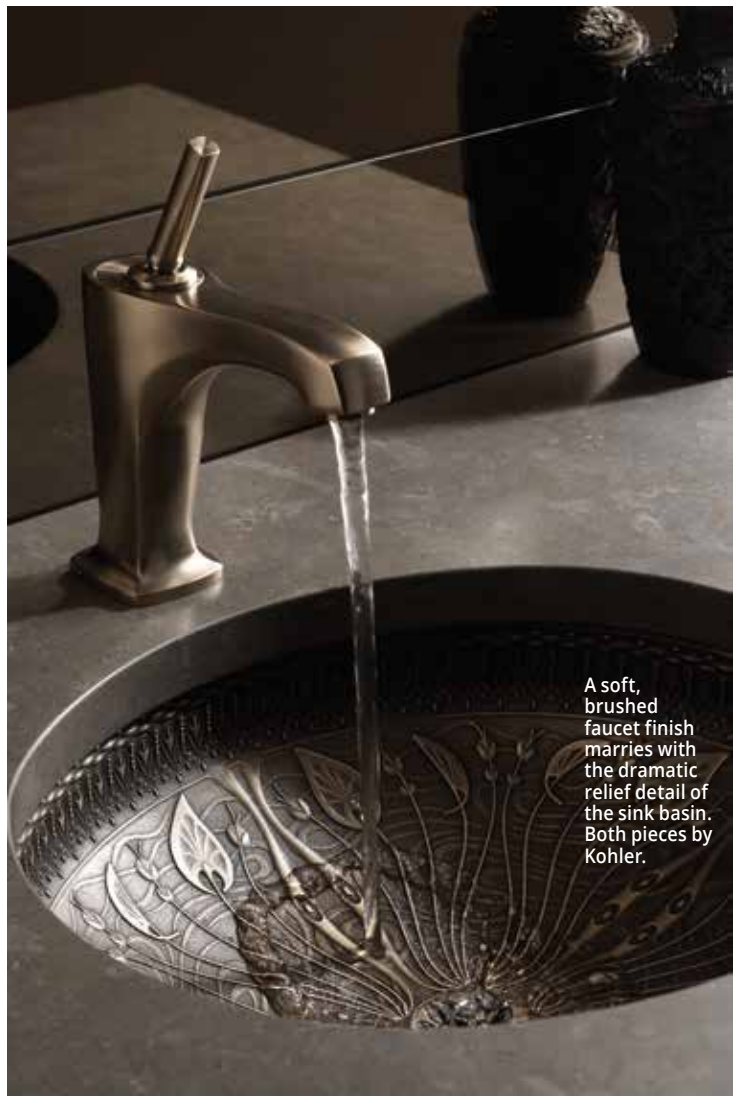


Not long ago, the idea of a brushed metal finish seemed revolutionary but texture has come quite a long way and can now be found adding intrigue to surfaces of all kinds, from sink basins and faucets to walls, floors and more.

A well-chosen dose of texture can soften a space or give it an edge, define a certain area or carry a theme throughout a room. It's the added element that will draw attention and compel visitors to reach out and touch.



The soft, hammered finish of Tribeca from Hardware Renaissance makes a statement before guests even enter the home.



A soft, brushed faucet finish marries with the dramatic relief detail of the sink basin. Both pieces by Kohler.



Matte black is marvelous on the Kai faucet from Pfister.



Modern angles pair with a thoroughly modern finish for the Active Plus Faucet from Franke.

Sparkling crystals in a variety of hues impress a feminine statement on the very clean, masculine lines of the Jem faucet.



# Opulent Accents

Luxury has had its ups and downs throughout history. The idea of an overabundance of gilded textiles, furnishings and decorative accents of all kinds once was an accepted method for alluding to one's status but today is considered more a show of pretentiousness.

Subtlety and specialness are now the keys to a well-appointed space; the use of that one piece that shines, serves as a focal point, and creates a setting that speaks of elegance and sophistication without overwhelming the senses. Such accents can come by way of luxurious lighting, glittering fixtures and decadent patterns that evoke feelings of having just entered a very special space. However the accent is applied, its use is crucial and will set the tone for all that surrounds it.

The Mushroom pendant by artist Christopher Moulder is part of FOREST, a limited edition line of lighting comprised of enchanting interpretations of elements found in nature.



The Anello wall sconce from Corbett recalls the lavish boudoirs and powder rooms of Old Hollywood. A coordinating chandelier is available as well.

The Per Se Sink Faucet from Kallista features glittering handles of gold flake and crystal. The option of a polished gold finish can amplify the impact further.



Trip Levers from Kallista use lapis lazuli, gold and malachite to turn a very functional fixture into a work of art.

The bejeweled Shyra from Linkasink is available in either a white or bronze glazed finish.



The Open Collection by Hastings pairs matte white cabinets with drawer fronts in 36 colors in matte or glossy finishes or in 10 wood finishes plus matte solid-surface countertops.



## Mixed Media

Interiors today are often more about a blending of styles than an extreme example of any one particular theme. Helping to move that idea along are furnishings and fixtures that mix varying materials into one product, paving the way for a space that pleases everyone who uses it.



The Unity collection by Ronbow is a harmonious blend of wood open shelving, stainless steel legs and a ceramic sink top. The collection was designed by leading German designer and founder of Kurz Kurz Design, Dorian Kurz.



An architectural edge from Robern—a wall-mounted vanity in luxurious Indian Rosewood paired with sleek steel trim.

Case in point are the increasing options that pair wood with steel, matte finishes with glossy, elegance with edgy details, taking standard items like tables and vanities to new heights. The results allow for a harmonious blend of motifs and an environment rich with appeal, no matter one's style.



For the Stockton Gathering Table, Bernhardt pairs the casual appeal of a wooden, picnic-style base with the modern appeal of a hammered steel top.



Sleek wooden beams equipped with LED lights are the basic building blocks of any Stickbulb fixture that creators RUX and their clients can dream up—from small table lamps to large-scale installations.

# W

## WOSTBROCK HOME



Interior Design by  
Krista Wostbrock-Design  
Photograph by Marco Ricca

interior design | home furnishings | to the trade

225 Goffle Road, Ridgewood NJ  
201.445.0807 [www.wostbrockhome.com](http://www.wostbrockhome.com)





# SANDPIPER CABINETRY

Custom Designed, Hand Built



*"Who better to build the project, than the person who created the concept"*

*George Hitchcock Suddell*

A Division of Suddell Architects & Builders

NYC Licensed

Huntington, NY 631-421-2595

[www.sandpiper-cabinetry.com](http://www.sandpiper-cabinetry.com)   [www.suddell.com](http://www.suddell.com)

# DESIGN BEYOND THE HOME

The **hottest** products  
from NeoCon East

Comprised of two styles, the (los)t angeles collection from Bentley Mills LA examines rich, textural patterns with a range of seven colorways that span from urban-inspired neutrals to vibrant, saturated hues.

The design industry is no stranger to trade shows that focus on everything from textiles to tabletop and every type of furnishing imaginable but, while many focus on the practice of residential design, NeoCon East, and its West coast companion, interprets the idea of a design show a little differently.

This is a show that goes beyond residential interiors and addresses materials, furnishings and design technologies appropriate for the workplace, healthcare industry, hospitality, retail, education, government and public spaces and beyond.

The products introduced here aren't simply functional; they are form at its best. We spend so much of our time away from home; shouldn't every environment, from the places we work to the stores where we shop, be a beautiful expression of design, organization and ergonomics? The products here from the recent NeoCon East can take that idea into reality and perhaps inspire a little something for your home as well.

The award-winning CHARRED collection from reSAWN Timber pays homage to the traditional Japanese technique of shou-sugi-ban, a commonly used term for modern charred wood designs.



ICF's Airleaf by Stefan Borselius is made from felt molded into a leaf shape. It can be hung on a straight or curved rail to provide visual separation as well as sound diffusion and absorption. There are 30 color options for the felt.



The Plunk ottoman from Keilhauer's Hangout collection features saddle curves for flexibility and comfort.



Unika Vaev's new ecoustic e3 tiles are made of self-sticking polyester and may be applied onto almost any wall substrate. Available in 16 colorways, the tiles allow for creating one's own personal pattern.



The Isidora Chairs and the companion Isidoro Stools by Magnuson Group embrace a lightweight, contemporary design that is durable and both water and UV resistant.

# MAGRO

AN ABC COLLECTION



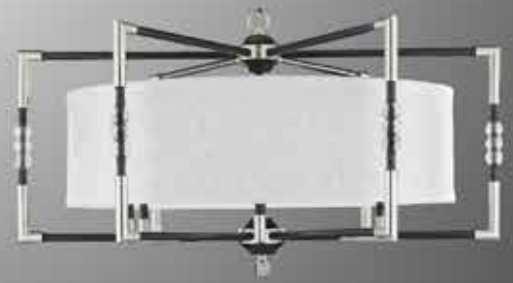
~CAOTICO~



~SPHERA~



~QUADRO~



~OMBRA~

AMERICAN BRASS & CRYSTAL

Factory Showroom NJ  
835 Lehigh Ave.  
Union, NJ 07083



Dallas Showroom  
DALLAS MARKET CENTER  
Trade Mart - TM3-3938

PH: 1.877.465.5617

[www.abclighting.net](http://www.abclighting.net)

835 Lehigh Ave, Union, NJ 07083

# Chelsea Art Group

Your premiere art source



EXPERTISE

GUIDANCE

VISION

SALES

EVENTS

DESIGNERS

COLLECTORS

NY (908)656.4804

LA (323)449.3705



[www.ChelseaArtGroup.com](http://www.ChelseaArtGroup.com)



CSL's LED Step lights cast a warm glow and offer added safety in icy winter months.

## Hot Light

It's a common belief that the right lighting can transform any space or experience and that applies both indoors and out. But, what happens when temperatures drop and snowflakes fall? With the proper sources for both light and heat, outdoor rooms need not close up in the winter months.

Fire pits and heat lamps offer increasingly stylish ways to keep warm and extend the useful life of decorative outdoor lighting, lending outdoor rooms year-round appeal and offering the perfect setting for cozying up to the season.



Fire Sense offers a full screen surround in its Pagoda Patio Fireplace.



Terrain's Layered Logs Fire Pit keeps kindling close at hand.



HEAT patio heaters are available in varied style options including hammered bronze, stainless steel and outdoor wicker.

Standing 7-feet tall, HEAT patio heaters offer heat to a 16.4 foot radius.



Rexford by Troy Lighting offers minimalist design that is suited to a variety of home styles.



Modern, sleek steel is among the options from AZ Patio Heaters.



Wellesley by Troy Lighting welcomes guests with the warm light and styling of historic street lanterns.





## COASTAL'S END

Rug created from the original by American Abstract Artist Carol Benson-Cobb  
BENSON-COBB STUDIOS. Wool and Silk. Stock and Custom Size Options Available.  
Handmade in India.

401 Penhorn Avenue, Suite 4  
Secaucus, NJ 07094

201.866.1933

[CreativeTouchRugs.com](http://CreativeTouchRugs.com)



**Creative Touch**

# Fire It Up



The great outdoors never looked so good with a cream honed custom lintel and hearth to keep you warm.

A human obsession and necessity since the dawn of time, fire is as much a part of our everyday lives as sunshine. And, thanks to advances in technology and craftsmanship, the mighty flame has never looked so good. Today, there is as much opportunity to personalize the look and feel of your fire as there is any other area in the home.

Whether you enjoy the warm glow a fire can bring indoors or cozying up to your custom designed hearth in the great outdoors, this is the season to enjoy the natural wonder and the beautiful ways you can make it your own.



Hearth Cabinet's new Horizon model offers a compact and contemporary presentation.



Charcoal brushed and chopped stone surrounds a striking central fire source while a decorative screen shields a secondary fireplace in the background.

# In the Mix

Sherwin Williams predicts a colorful year ahead

By Tyler Wisler

**Whose head has been spinning with all the chaos 2016 threw our way?** Whether it was the unforgettable election, the excitement and drama of the Rio Olympics, or the never-ending interest in the Kardashians, it's

the world in which we now exist and such events inevitably affect the trends that drive fashion and home design. With its latest Color Forecast: colormix™ 2017, Sherwin-Williams addresses the restless landscape of our world via four original color palettes.

"Our forecast this year is an exploration of the trends and influences that are emerging to drive design toward a state of restless energy," says Sue Wadden, director of color marketing for Sherwin-Williams. "Each of our four palettes tell a distinct color story, offering opportunities for homeowners and professionals alike to explore color in new and exciting ways."

Based on extensive research into global trends, four distinct palettes were born: Noir, Holistic, Intrepid and Unbounded. Each palette is comprised of 10 colors.

**"Our forecast this year is an exploration of the trends and influences that are emerging to drive design toward a state of restless energy"**

—Sue Wadden, director of color marketing, Sherwin Williams



## Noir

Driven by baroque and romanticism trends, a renewed interest in faith and spirit and celebration of the night, the Noir palette is rich with colors that evoke vine-ripe fruits, Nordic blues, moody neutrals and golden yellow. The stark style looks completely modern in residences or commercial properties.

SW 6259

SPATIAL WHITE

SW 9179

ANCHORS AWEIGH

SW 9185

MAREA BAJA

SW 6039

POISED TAUPE

SW 7076

CYBERSPACE

SW 6286

MATURE GRAPE

SW 6526

ICELANDIC

SW 6279

BLACK SWAN

SW 7623

CASCADES

SW 6395

ALCHEMY



SW 9175

SW 6224

DEEP FOREST BROWN

MOUNTAIN AIR

SW 0034

ROYCROFT ROSE

SW 0014

SHERATON SAGE

SW 7710

BRANDYWINE

SW 7605

GALE FORCE

SW 7571

CASA BLANCA

SW 9138

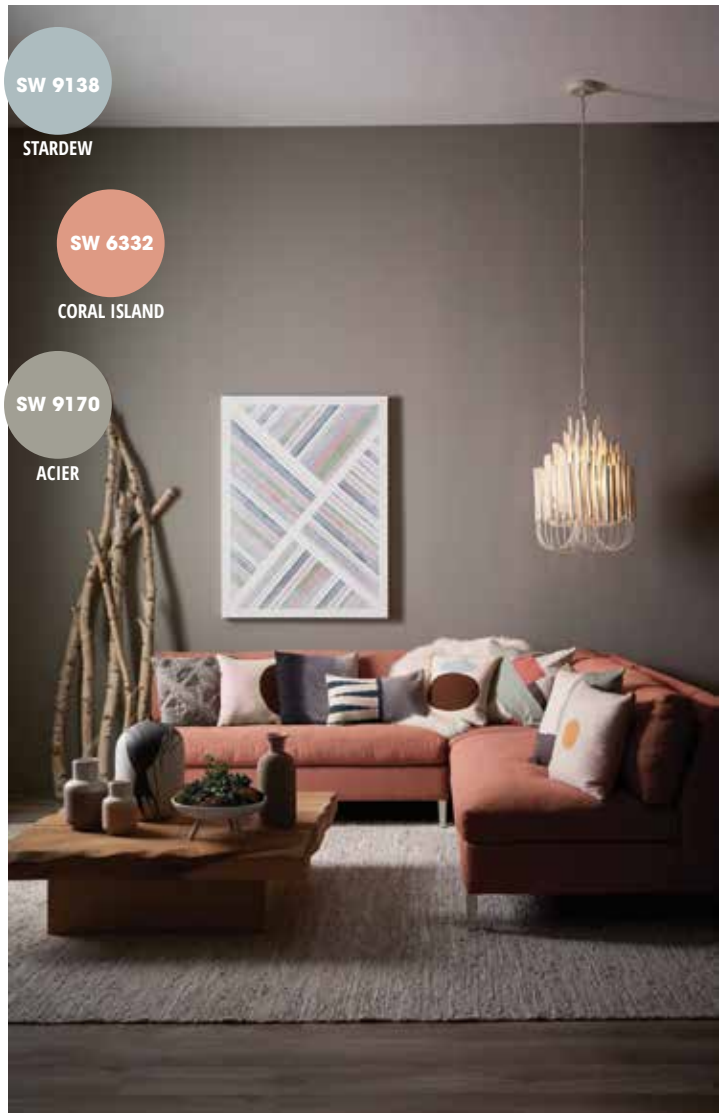
STARDEW

SW 6332

CORAL ISLAND

SW 9170

ACIER



# Holistic

“The holistic palette is softly balanced and beautiful, and perfect for restive spaces,” Wadden says. “This is a grown-up version of pastels. Soothing, warm tones pair with airy cools for a harmonious and nature-inspired palette.”



SW 6915  
CITRONELLA

SW 6071  
POPULAR GRAY

SW 6990  
CAVIAR

SW 6839  
KIMONO VIOLET

SW 7598  
SIERRA REDWOOD

SW 6621  
EMOTIONAL

SW 6656  
SERAPE

SW 9020  
RAYO DE SOL

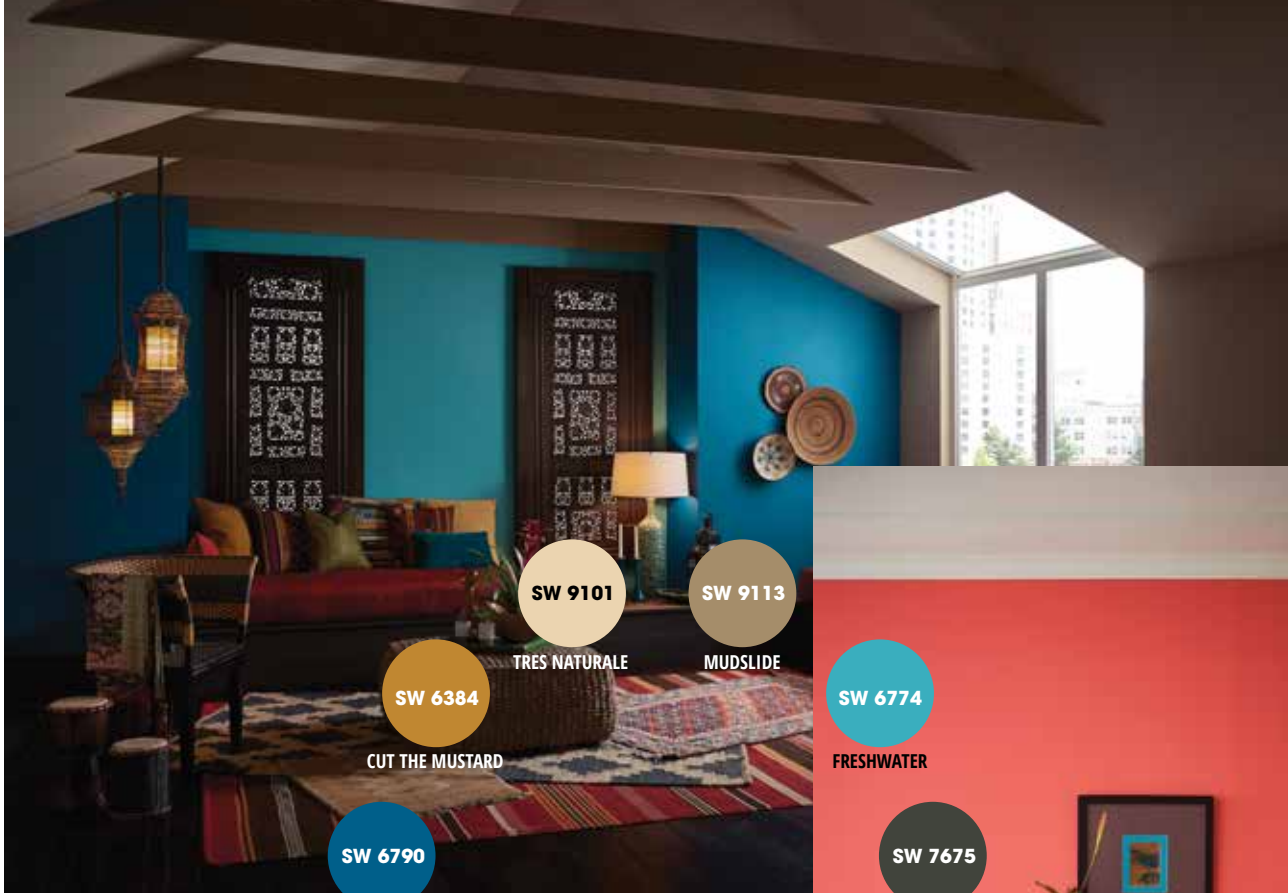


SW 6816  
DAHLIA

SW 7757  
HIGH REFLECTIVE WHITE

# Intrepid

The virtual and the real are blurring in the form of a seamless commerce. Impatient for social and political change, individuals are continually reinventing themselves. Youth culture and global collaboration lead to a feisty energy, which influenced this retro palette, including fiery oranges, vibrant kimono colors and the simplicity of black, white and gray.



- SW 9101 TRES NATURALE
- SW 9113 MUDSLIDE
- SW 6384 CUT THE MUSTARD
- SW 6790 ADRIATIC SEA



- SW 6774 FRESHWATER
- SW 7675 SEALSKIN
- SW 6683 BEE
- SW 6608 RAVE RED
- SW 6606 CORAL REEF

# Unbounded

"This earth and spice palette tells the story of how migration is forcing cultures to mingle and share a collective 'we,'" Wadden says. "Audacious colors in combination with the confluence of foreign patterns and exotic textures can create a look that is striking and entirely new."

## SHERWIN-WILLIAMS COLOR OF THE YEAR: POISED TAUPE

Drawn from the Noir palette, one of four palettes in colormix™ 2017: The Sherwin-Williams Color Forecast, Poised Taupe addresses the search for authentic spaces that recharge the spirit in uncertain times and where perfection can seem like the ideal. "Poised Taupe celebrates everything people love about cool gray as a neutral and also brings in the warmth of brown, taking a color to an entirely new level," Wadden says. "Not cool or warm, nor gray or brown, Poised Taupe is a weathered, woody neutral bringing a sense of coziness and harmony that people are seeking."

SW 6039

POISED TAUPE



The luxury and relaxation of a steam room in your very own home.

# Just Hit Steam

**At-home steam showers offer wellness and private luxury**

The luxury of a good steam used to be the stuff of bath houses, health spas and fitness centers but at-home technology has ushered in a new age of steamy luxury—one that takes place in the privacy and convenience of your very own bathroom.



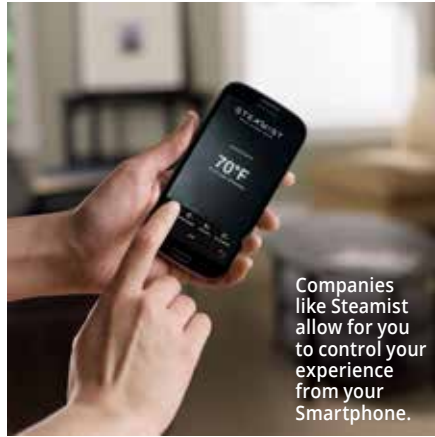
The list of benefits steam offers one's health is convincing indeed: relief from aches and pains; clearing of sinuses; deep, safe cleansing and detoxification of skin; and general relaxation top the list but when you combine those with added features like light, music and aroma therapy, today's home steam shower spas leave scant little to the imagination.

Options for achieving your perfect steam unit abound and creating such a tropical paradise in your own home is easier than you may think and doesn't require a bathroom of extraordinary size. You simply need space for a stall shower and a neighboring space, like a closet, to house the relatively small generator that will transform your standard shower into one of steamy relaxation. Your existing shower enclosure will naturally need to be steam-proofed (a tile contractor and shower door installer can provide appropriate options) or a new stall unit specially designed for steam can be purchased as well.

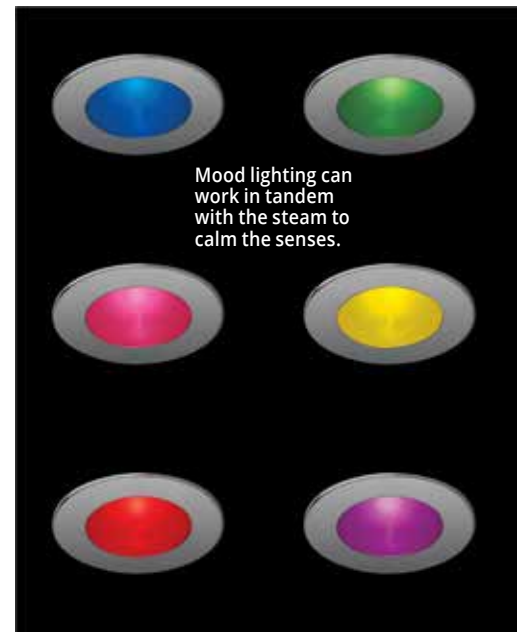
The first order of business should be finding the right dealer for your project. Steam generator companies like Mr. Steam and Steamist offer local dealer finders on their websites and the dealer can then walk you through the project, your specific needs and options and cost of installation.

Though you may see a slight uptick in your electric costs, the money you save by handling your daily stress at home could render the difference a wash. And, you have the added good vibe of knowing your decision to use steam is a green one as a 20-minute steam uses significantly less water (90%-plus) than a shower of the same time.

If you've thought an at-home steam shower was the stuff of millionaires, think again and talk to a dealer about this very achievable luxury and remedy in one.



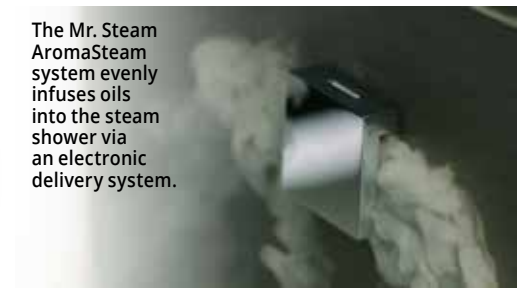
Companies like Steamist allow for you to control your experience from your Smartphone.



Mood lighting can work in tandem with the steam to calm the senses.



Speakers can be added to heighten the spa-like experience.



The Mr. Steam AromaSteam system evenly infuses oils into the steam shower via an electronic delivery system.

Sit back and relax with the simple addition of a wall-mounted seat.



Digital controls allow for easy adjustments.

**WARM WINTER**  
Simple steps can keep the heat pumping when temperatures plummet.



Photo Credit: hutui6.com

# Getting through the Winter

## Keep the heat running smoothly until spring

By Michele Keith

**G**ive yourself a pat on the back. You've nearly made it through winter with no major catastrophies in your home heating system. But, can you make it to the finish line?

Whether high in the mountains or down at the beach, old or new, our primary residence, a place to visit solely on weekends or closed up 'til next summer, it's wise to check up on things so you're not faced with any inconvenient surprises before spring.

If anyone knows how to do this, it's Mike Greco, Heating Division Manager of Blackman Plumbing Supply. As co-owner of Greco Bros. Fuel Corporation for 30 years before joining Blackman, he has been directly involved in every segment of the industry—from delivering oil to installing and servicing heating systems.

"Everything wears out from normal use," he says, "no excep-

tions. The best thing you can do is to have annual tune-ups conducted by a professional so it is in peak condition, functions efficiently and lasts as long as possible."

"Find a heating contractor knowledgeable about the kind of system you have," he says, "oil or gas, atmospheric vent or wall-mounted boiler. If he's located near the house, so much the better; you might be able to give him the keys so that whether you're there or not, he's able to attend to any emergency." He also suggests that you consider purchasing one of the Smartphone apps that connects you with your home, or to link the heating unit to your home security system.

Another maintenance advocate is Carl Krause, Bosch Thermotechnology's Long Island sales representative, Director of HVAC Operations for Marplat Company and owner of Northeast Gas Specialists. "Preventive care," he says, "is imperative for all heating manufacturers' products as is the homeowner's due diligence. Leaving it up to chance is a recipe for failure."

He suggests three simple but important actions that you or better yet, your contractor, should take depending upon your system: For a forced warm-air unit, verify filters are clean; if not, replace them. For a hot-water boiler, confirm there is no air in the pipes, often signaled by a knocking sound. If there is, the line must be bled to purge the air. For a steam system, Krause counsels that the low water cut-off should be flushed of debris and water reintroduced into the boiler. Safety checks of carbon monoxide detectors should also be conducted and batteries replaced if needed.

All U.S. Boiler products have an Outdoor Reset option that saves fuel by fine-tuning the heating system's water temperature in accordance with the outdoor temperature.



Safety checks of any system should be conducted regularly.

## THINGS YOU CAN DO

- 01 Verify that weather stripping around doors and windows is still tight.
- 02 Check that the "chimney balloon" in your fireplace is in the proper place to ensure that warm air stays in the room and doesn't escape up the chimney.
- 03 Review ductwork placed on any leaks, holes or poor connections. Make sure mastic sealant or metal tape is still secure.
- 04 Move any furniture and curtains that cover heating registers.
- 05 Reverse ceiling fans. Reversed blades produce an updraft and push down heated air from the ceiling.
- 06 Inspect, clean or change air filters once a month in your central air conditioner, furnace and/or heat pump. Your contractor can show you how to do this.



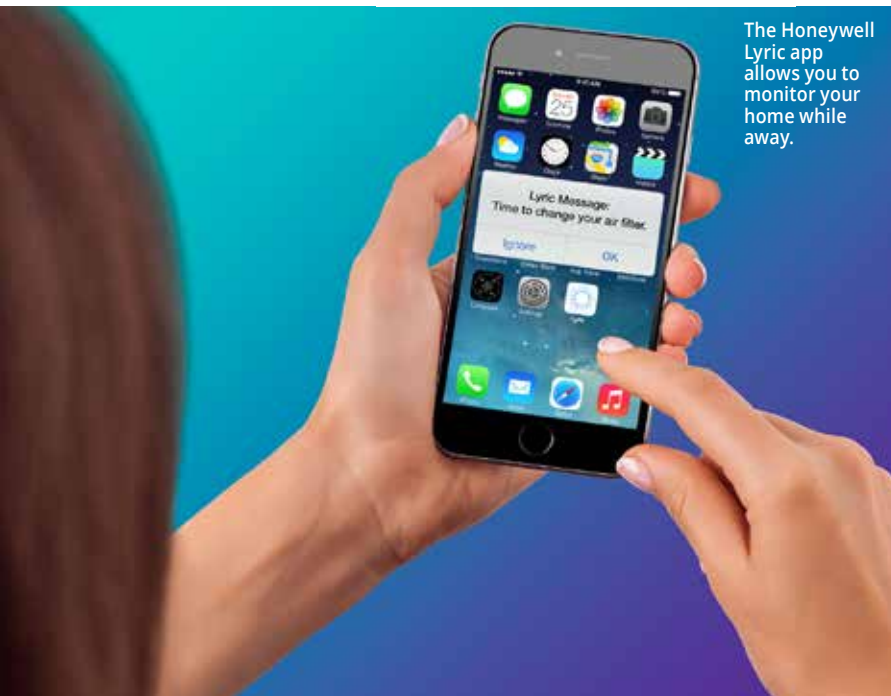
## SAVING ENERGY ONE HISTORIC WINDOW AT A TIME

While city dwellers and all those who live in older or historic homes may be quite familiar with the task of sealing up the windows with sheets of plastic insulation come winter, there is a more attractive and efficient option that offers the added bonus of not leaving evidence of the effort on the surrounding woodwork: Indow window inserts.

Designed to add comfort, save energy and block the drafts coming through original windows, the inserts manage to make the built environment more energy efficient while also keeping original buildings intact. The brainchild of Indow founder and CEO, Sam Pardue, the inserts came about as a solution to better insulate his own 1906 Portland Craftsman home. The resultant inserts are custom-manufactured sheets of acrylic edged with the company's patented Compression Tube. They require no track or magnetic system that can damage existing windows. Indow inserts also offer the added bonus of quieting the outside noise that can penetrate older windows by up to 70 percent.

Residential and commercial buildings in the U.S. account for 40 percent of energy use with a significant amount of that energy lost through windows. A U.S. Department of Energy study found that Indow window inserts, which function like interior storm windows, reduced the heating and cooling costs in a Seattle home by 20 percent.

The Honeywell Lyric app allows you to monitor your home while away.





Monitoring a heating unit can prevent unexpected trouble in any system.

"Homeowners are the first and best line of defense in identifying potential trouble in their heating system," says Ron Beck, Technical Training Manager for U.S. Boiler. A simple way to do this is to ask yourself if your heating bill has risen sharply (without obvious cause like an extended cold snap) or if there are any unexpected noises coming from the unit. If the answer to either one is 'yes,' call in a pro."

Problems can also be detected in more obvious ways, the boiler isn't running or the house is cold. This could be because the control system has detected trouble and entered into error mode or lock-out. "If your boiler is displaying either," says Beck, "call in an expert. Above all, do not attempt to fix the boiler yourself."

"As winter winds down, consider the possibilities of a heating-system upgrade for next year," says the company's Residential Product Manager, Dave Hansen, suggesting one. "All U.S. Boiler products include or have Outdoor Reset as an option for example, which saves fuel by fine-tuning the heating system's water temperature according to what the actual outdoor temp is, especially valuable in spring and fall."

Get through this winter, and then call the pro. You can do a lot now so next year will be problem-free. ■

Monitor multiple areas with the Zone Panel from US Boiler.



“Find a heating contractor knowledgeable about the kind of system you have.”

—Mike Greco



The Greentherm Tankless Water Heater from Bosch.



H-LINE BY MARK ZEFF  
FOR WATERMARK

WATERMARK-DESIGNS.COM



**ID** Infinity Drain

**The only Site Sizeable linear drain.**

Perfect for curbless showers and barrier-free bathrooms, an Infinity Drain provides an architectural aesthetic and limitless possibilities for your project.

Ideal for residential, hospitality, and healthcare applications.

**Made in USA**

516.767.6786  
[www.InfinityDrain.com](http://www.InfinityDrain.com)



# Bradford White Means American Jobs



American Made ★ American Owned ★ Wholesale Only

## Why Would You Buy Any Other Brand?

With no bailouts or special favors needed, Bradford White continues to invest in the future of America. We have you, the professional installer and wholesale distributor to thank for it. Because of your support, we remain an American-Owned company providing American-Made products through Wholesale Distribution for Professional Installation.

These ideas work. With the help of a high quality product and practical innovation, we're building for the future. As proof of this, Bradford White Corporation is growing.

In Middleville, MI, we've modernized systems and equipment throughout the Bradford White factory. We recently opened our new state-of-the-art iTEC™ training facility and are currently undergoing our largest factory expansion in the history of the company by adding 100,000 square feet of additional manufacturing and shipping capacity. Our subsidiaries are growing as well. Laars Heating Systems added a new customer training center and additional factory space while Niles Steel Tank increased capacity with investment in process equipment and tank lining technology.

*It all means more American jobs. Of all our innovations, that may be the most important of all.*

◀ Scan here to see a message from the employees of Bradford White Water Heaters.



  
**BRADFORD WHITE**<sup>®</sup>  
CORPORATION

Built to be the Best<sup>™</sup>

©2013, Bradford White Corporation. All rights reserved.

AMA-ARPT 11/13



[www.bradfordwhite.com](http://www.bradfordwhite.com)

STEAM BATHING IS ESSENTIAL IN YOUR HOME  
- *It's time to make luxury essential* -

**Mr. Steam...** *Leading the industry by* **Transforming Homes & Home Owners.**

Mr. Steam has been in the “feel good” business since 1917, producing top quality steam systems, products and spa experiences. Visit your Blackman showroom today to learn how you can incorporate a steam bath into your planned renovation or new home project and learn more about our new award winning AirTempo control and our new linear steam head.

Available at

**BLACKMAN**<sup>®</sup>

[www.mrsteam.com](http://www.mrsteam.com)



mr steam<sup>®</sup>

Feel Good Inc.



efficient,  
reliable  
home heating  
comfort



Your family deserves the best. When you select a Burnham brand boiler, your family will get exactly that. Our family of high efficiency boilers offers reliable, energy-saving, home heating comfort in an attractive boiler that is perfect for your specific installation needs. Ask your professional heating contractor about the family of high efficiency, American-made boilers from U.S. Boiler Company, and start enjoying the benefits of efficient, reliable heat today!

See our full product line at [www.usboiler.net](http://www.usboiler.net)



**MADE IN U.S.A.**



# COME HOME TO YOUR SENSES



Indulge in the embrace of steam, and let the heat penetrate, soothe and rejuvenate body and mind. Then, with just a touch, transform your environment with color, aroma and sound.

Come home to Total Sense™, a steam spa that will await your pleasure each day, welcoming you to an oasis of sensation, comfort and serenity.

Awaken your senses at [steamist.com](http://steamist.com)

**STEAMIST®**  
RELAX. RESTORE. RENEW.



## Catering Cakes Cuisine



**La Promenade is a dynamic gourmet food retailer and off-premises catering company,**

which takes great pride in making your special event incredibly memorable.

We specialize in catering and event production for weddings, Bar/Bat Mitzvahs, corporate events, and any special occasion.

137 PIERMONT ROAD, TENAFLY, NJ 07670  
(201) 567-2500 - [WWW.LAPROM.COM](http://WWW.LAPROM.COM)





Jessica Harlan is a food writer, educator, caterer, and recipe developer. She has written for Clean Eating, About.com, Tasting Table, and Yahoo.

# Winter Entertaining Made Easy

By Jessica Harlan

The winter season is the perfect time of year to open your home to guests. Whether you're planning an intimate dinner or a bustling cocktail party, your home is at its best when it's filled with warm scents from the oven and the warming laughter of family and friends. So pull out your calendar and your address book and set a date to celebrate.

The tips, must-have accessories, and recipes on these pages will get your planning off to a good start.

## WINTER ENTERTAINING TIPS

- ❖ A theme can help focus your planning, and can give the guests a conversation starter. Host a cookie swap or a soup sampler, or pick a themed dress idea, like black-and-white or ugly sweaters.
- ❖ Don't overlook your outdoor space. Unless it's bitter cold, inviting guests to circulate in and out of the house will give a crowded party more breathing room and keep your house from getting too stuffy. Few things are cozier than a fire pit in the winter, especially if you set blankets out on your patio furniture and serve warm beverages.
- ❖ Light your home with candles. An evening party illuminated with flickering candles (use electric ones if you're concerned about safety) has a magical, romantic feel to it (and it hides small flaws, like that scuffed baseboard you didn't have time to repaint!). Strands of fairy lights give a similar effect, and can be strung around windows and doorframes, clustered in a silver bowl as a centerpiece, or draped along a mantel or the top of a piano. They're also a great way to add interest to the bar or buffet.
- ❖ Keep the bar simple. Stick with red and white wine and the most basic mixers: vodka and gin, perhaps. Consider making a signature drink, such as a pitcher of punch or a slow cooker full of cider, each of which can be served on its own to non-drinkers or spiked with liquor.
- ❖ Never underestimate the power of music to set the tone. The perfect playlist should be every hostess' goal and, with so much music right at our fingertips, you'll have no problem finding a selection that suits the mood of the party, whether it's jazzy sets for a cocktail party, orchestral arrangements for a sit-down dinner, or contemporary covers for something a little more casual.

# WINTER ENTERTAINING ESSENTIALS

These must-haves will ensure that every wintertime party is as stylish as it is successful.



## Warm Up to WINTER

1



### A FIREPLACE-SCENTED CANDLE

If you don't have a fireplace, this candle, which captures the smoky warmth of a fire in the hearth, is the next best thing. What's more, the wooden wick actually crackles while it burns.

[www.davilinswoods.com](http://www.davilinswoods.com)



2

### A HANDY TRAY

During a party, there never seems to be enough room to set drinks or that extra bowl of smoked almonds. Enter the Large Lacquer Tray from West Elm, a generously sized, rimmed tray with cutout handles that can be used to deliver cocktails or placed on an ottoman. Pair it with the Butler's Stand and it's even more versatile.

[www.westelm.com](http://www.westelm.com)

3



### A LOVELY COCKTAIL PITCHER

Larger-batch cocktails served up in a pitcher are so easy for parties. Find a cocktail recipe that incorporates seasonal flavors like cranberry, apple cider, or pomegranate. It'll make a beautiful presentation in this sleek crystal cocktail pitcher from Waterford.

[www.waterford.com](http://www.waterford.com)



4

### A STUNNING CHIP AND DIP SERVER

It's a showstopping objet d'art when not in use, but at a party, Nambu's Scoop Server is the perfect piece: a large bowl holds chips or crackers, while the dip is elegantly elevated. Nambu's signature metal alloy retains temperature, too, so a heated dip will stay warm longer.

[www.nambe.com](http://www.nambe.com)

5



### THE PERFECT BAR SET

The new cocktail culture seems here to stay and the best way to show you're in the know is with a classic cocktail set that's as striking as it is useful. One fine example is the suite of stainless steel bar pieces designed by Ana Reza-Hadden for Crate & Barrel. The timeless pieces will always look fresh.

[www.crateandbarrel.com](http://www.crateandbarrel.com)



6

### AN EXTRA BURNER

Sometimes there just aren't enough burners on the stove. Enter the Duxtop Portable Induction Cooktop, which heats ingredients quickly and efficiently, and can maintain a precise, steady temperature. Best of all, it doesn't have to stay in your kitchen: bring it into the dining room to keep buffet items warm.

[www.amazon.com](http://www.amazon.com)

As the temperature continues to drop, **Blackman at Home** turned to Julian Payraudeau, owner of La Promenade Catering, in Tenafly, NJ, for some tips to get us deliciously through the coldest days of the year.

### When you think of cold weather cuisine, what comes to mind?

The first things that come to mind are roasts, stews and soups. These are the dishes that make you feel all warm inside.

### What is your favorite dish to cook up for a cold and snowy weekend?

A French dish called cassoulet.

### Any suggestions for special takes on traditional "comfort foods"?

Adding a variety of cheeses to the traditional mac-and-cheese or simply making meatloaf in muffin tins.

### What are the staples all cooks should have on hand and in the cupboard to get them through the winter deliciously?

White beans, cheeses, French baguette, bacon, eggs, frozen peas, and prosciutto.

### How can a hostess make winter entertaining special?

Winter is a hard season to entertain anyone, including oneself. Short days, cold weather and life itself seems to be in black-and-white. But, you can make winter entertaining special by doing more hands-on parties. Have your friends do the cooking with you or have meals that require assembly to eat. Or, for the real thrill seekers, take the party outside! Create a bonfire, serve up some hot food and drinks, and play some outdoor winter games. Don't forget to dress warm!

### Valentine's Day is fast approaching. How can food translate as love and how can a couple mark the holiday with a special dish?

The most important moments of my life have revolved around food. My first date with my wife, the meal my wife and I shared the night I proposed.

It's all about sweetening the heart and savoring the moment, all of which can only be done with a carefully composed dish. Whether it's a gâteau au chocolate on Valentine's Day or a glass of authentic champagne to celebrate any occasion, it will be a win when you stick to the things all men and women know best: food.

## Date and Goat Cheese Crostini with Honey



Photo: Jessica Harlan



× 20

**MAKES ABOUT 20 PIECES**

These elegant little nibbles are sweet enough to serve as dessert, but they also go great with a glass of wine or Champagne. You can use a multigrain baguette, sliced on the bias, for a rustic presentation, or buy a sandwich loaf and cut the slices into diamonds or rounds for a more refined look.

- Multigrain baguette or sandwich loaf
- 8 ounces goat cheese, softened
- 2 tablespoons extra virgin olive oil
- $\frac{2}{3}$  cup chopped dates
- 2 tablespoons good-quality honey
- Flaky sea salt

- 1 Preheat the broiler of an oven or toaster oven. Place the bread on a baking sheet lined with parchment and toast the bread under the broiler, turning over after the top side is lightly toasted to brown the other side.
- 2 Spread about 1 tablespoon of goat cheese in a thick layer on each piece of bread. Drizzle about a teaspoon of olive over the goat cheese then sprinkle each piece evenly with chopped dates.
- 3 Return the toasts to the broiler and broil for about 5 minutes, or until the cheese just starts to get bubbly. Make sure to monitor the cooking progress so the edges don't burn.
- 4 Drizzle each toast with a little honey and sprinkle with flaky sea salt. Serve warm or at room temperature.



## Warm Sausage Dip

This creamy, slightly spicy dish is so versatile. Serve it in a ramekin with crusty bread or butter crackers, dollop it onto crisp endive leaves, or spread it onto mini toasts and top with a sliver of red bell pepper, or a green olive.

- 8 ounces loose breakfast sausage, uncooked
- 2 (8-ounce) packages cream cheese, softened
- 1 (15-ounce) can diced tomatoes
- 1 (4-ounce) can diced Hatch green chiles, drained
- $\frac{1}{2}$  teaspoon chipotle powder or smoked paprika
- 1 tablespoon fresh lime juice, or more to taste
- 2 tablespoons finely minced fresh parsley

- 1 Preheat the oven to 350°F. Place the sausage in a nonstick skillet. Cook over medium-high heat, breaking up the pieces into crumbles with a wooden spoon, until the sausage is cooked through, about 5 to 7 minutes. Drain excess fat from the pan.
- 2 With the heat on low, add the cream cheese, diced tomatoes (undrained), green chiles and chipotle powder to the pan. Stir until the ingredients combine into a smooth, creamy mixture. Add the lime juice to taste. Transfer the mixture to an ovenproof ramekin and bake for 20 minutes, until bubbly. Just before serving, garnish with the parsley.

**MAKES ABOUT 1½ CUPS**



## Gouda Gougères

**MAKES ABOUT 4 DOZEN**

Gougères are a classic French snack, a savory cheese puff as light as air (they're a sister to cream puffs and eclairs). These are best when they're still warm from the oven. If you're making them for a party, you can make and form the dough ahead of time, freeze it, and pop them into the oven just before your guests are due to arrive.

- 1 cup water
- $\frac{1}{4}$  cup unsalted butter
- $\frac{1}{2}$  teaspoon kosher salt, plus more for sprinkling
- 1 cup bread flour
- 4 large eggs, room temperature
- 7 ounces aged gouda cheese

- 1 Preheat the oven to 400°F. Line two baking sheets with parchment paper.
- 2 In a medium saucepan, combine the water, butter, and salt. Bring to a boil over medium-high heat, stirring occasionally. Add the flour and cook over medium heat, stirring with a whisk, until the mixture thickens and becomes pasty.
- 3 Transfer the flour mixture into the bowl of a stand mixer. Beat the dough at medium speed for a few moments to cool it. When it is no longer steaming, add the eggs, one at a time, incorporating all of the egg into the mixture before adding the next. On low speed, stir in the cheese just until combined.
- 4 Spoon the dough into a pastry bag fitted with a large tip, or use a large zip-top bag with a 3/4-inch hole cut into one of the corners. Pipe 1-inch mounds of the dough onto the prepared baking sheet, leaving a few inches of space between each. At this point, gougères can be frozen on the baking sheets, then later transferred to a freezer bag or other container.
- 5 Place in the oven and immediately reduce the temperature to 350°F. Bake for 20 to 25 minutes, leaving the oven closed for at least the first 10 minutes of cooking to make sure the pastry puffs completely. The gougères will be puffy and browned when done. Remove from the oven and serve warm. Cooking frozen gougères (no need to defrost!) will add another 5 minutes or so to the cooking time. ■



## IMAGINE THE POSSIBILITIES

Add an instant hot water dispenser to your kitchen for near-boiling water that's ready all of the time. **Blanch vegetables, loosen jar lids, clean silverware, speed-up boiling water, warm a baby bottle.** With an instant hot water dispenser, there is an endless list of uses to discover!

➤ Find out more at [insinkerator.com](https://insinkerator.com)





GOING UP  
An elegant  
winding  
staircase is  
an exercise in  
both form and  
function.

# ROOMS WITH A VIEW

A warm and peaceful palette sets an elegant tone in Manhattan

*By Jennifer Quail*

*Photography by Kim Sargent Photography*



The soft palette allows the art collection to pop. On the wall here is *Melons* by Andy Warhol.

**KNOWN FOR DESIGNING** thoughtful interiors in lovely waterfront locales, interior designer Gil Walsh, of Gil Walsh Interiors, was brought to an envious New York City location to create a peaceful and elegant respite from the frenzied pace that defines the city's streets.

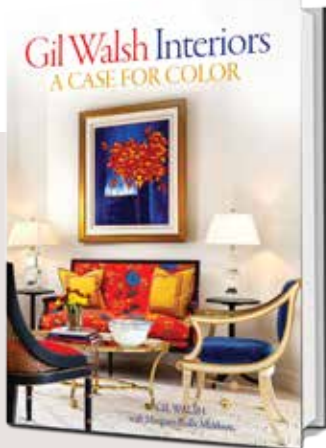
Located in UN Plaza, the 5,000 square foot duplex was designed in a French Moderne style that sets a tone of timeless elegance. The designer intentionally kept the interiors soft and neutral to let the homeowners' art collection, as well as the spectacular views of the Manhattan skyline, take the spotlight. The quiet sophistication Walsh created is the perfect backdrop for the city that never sleeps—warm tones, textures and patterns repeat throughout the apartment home, lending a sense of flow and continuity as one moves from room to room.

Clever design decisions are found throughout the space. Pocket doors separate the master suite from a sitting room, lending the versatility of an extra guest room when needed; light colored oak parquet squares were used on some of the walls, keeping to the overarching color scheme while adding extra visual interest; and rich materials and strategic lighting cast a warm, welcoming glow, taking an already exquisite location to new heights.



The warm, neutral palette is carried from room to room.

*Gil Walsh Interiors: A Case for Color, by Margaret Reilly Muldoon, Gibbs Smith, \$40.*



# Gil Walsh Interiors: A Case for Color

Taking a bright look at the work that has marked her career, this tome showcases the traditionally colorful work of designer Gil Walsh whose career in design has taken her from sky-scraping apartments in Palm Beach to historic landmark buildings like Fallingwater and cottages on Martha's Vineyard. Take a deeper look at the artistic techniques that have kept Walsh in business for 40 years.



Light colored oak parquet squares used on walls add depth.





Perfect views of Manhattan serve as their own piece of art.



Colors, patterns and texture repeat throughout for a cohesive statement.

# SUNNY SKIES



# From the Hamptons to Palm Beach: Farrell Building stretches southward with posh plans

By Michele Keith



Photo Credit:

**POSH PROPERTY**  
Sprawling homes  
crafted of wood on  
ample green acreage  
dot the Hamptons.



**OCEAN VIEWS**  
Homebuyers come from diverse regions to enjoy Farrell's homes on Florida's sunny shores.

**KNOWN FOR CONSTRUCTING BIG HOUSES BOASTING BIG PRICE TAGS—** the majority currently 3,500 to 10,000 square feet and priced in the \$3 to \$10 million range—Joe Farrell's custom and speculative-building company has been a Hamptons, Long Island, fixture for 20 years. Characterizing his business today as "terrific, always evolving," it should come as no surprise that he's now becoming a major player in the Palm Beach market.

It was about four years ago when he sold the vacation home he and his family had enjoyed in the area since 1999, to rebuild on some "incredible" oceanfront property south of Palm Beach in Manalapan, once owned by boxing promoter Don King. Typical of his think-big philosophy, he explains his decision to start a business there at the same time: "It was easy to see that if I was going to put all that effort into one house, it'd be more economical to build four or five." He ended up building eight.

"No one [in the area] is building spec houses to our standards," he says, "so we're doing very well." How does Palm Beach differ from than the Hamptons? "In a variety of ways," Farrell says, beginning with the customer. "In the Hamptons they're most likely from the city, while in Florida, they're from everywhere, Canada, the Midwest, Pennsylvania. It's much more diverse."

They're also "more likely to be older and want a monster house, say 15,000 square feet, to accommodate visiting kids and grandkids. Generally speaking, our Hamptons homes are smaller. In addition, the snowbirds are comfortable in the \$3 to \$30 million range."

When it comes to getting the actual work done in Florida, it's been a "fantastic experience" for Far-

rell. "I've found so much manpower, very talented, skilled and hard-working. Plus, because they live nearby, unlike in the Hamptons where the scarcity of affordable housing makes it necessary for laborers to drive an hour-and-a-half one-way to the construction site, they are very available."

One thing he's had to acclimate himself to are some basic building differences due to local weather and custom. For example, "It's wood construction with wood roofs in the Hamptons, a much faster and easier process than the poured concrete and steel, with cement or terra-cotta roofs favored at the beach," he says. Except for these differences, and flying in some of his Hamptons-based people to work in Palm Beach from time to time, Farrell uses the same business model in both locations.

"I've experienced many ups and downs over the past two decades," says Farrell, "but people know my work and like the one-stop shopping we offer. Above all, they trust us. We're already working with the third generation of some Hamptons families we built for way back when. I'm sure the same will happen in Palm Beach."

*Farrell Building Company, 631-537-1068, farrell-building.com. ■*



**HAMPTONS' HERITAGE**  
A classic style home  
for the classic town of  
Bridgehampton.



**MATERIAL MATTERS**  
Building in  
Florida is about  
concrete and  
steel, whereas  
the Hamptons  
favors wood.



# TOWN & COUNTRY

## KITCHEN AND BATH

25 BRIDGE AVENUE SUITE 100 RED BANK, NEW JERSEY 07701 P (732) 345-1441 TCKBDESIGNS.COM  
KITCHENS | BATHS | LIBRARIES | BUILT-INS | CUSTOM CABINETRY

{ appointments recommended }

# **BLACKMAN**<sup>®</sup>

## WEST PALM BEACH



## GRAND OPENING

Decorative Plumbing Fixtures, Fittings,  
Lighting, Tile, & Stone since 1921.

820 S Dixie Hwy, West Palm Beach, FL 33401  
at the corner of Okeechobee Blvd.

561-650-7425

[WWW.BLACKMAN.COM](http://WWW.BLACKMAN.COM)

West Palm Beach • Manhattan • Long Island • Southampton • New Jersey



**WELCOME HOME**  
The entry foyer is marked by a harlequin checkerboard floor of marble.



# SPIRIT OF THE KEYS

A sophisticated turn for a house on a private island in Florida

*By Jennifer Quail*

*Photography by Deborah Whitlaw Llewellyn*

**IN THE COLORFUL, CREATIVE REGION OF THE FLORIDA KEYS,** how does one make a home stand out? Call in the colorful, creative genius of Taylor & Taylor and witness a transformation that is anything but ordinary.

A Stark carpet ties together vintage metal chairs, Chinese figurines and bamboo accents.



For a house on a private island near Key West, the husband-and-wife design team took the home from its existing casual style to one that brought the traditional side of sophisticated Southern living into the mix. The home itself is classic Key West—clapboard siding, gingerbread ornament and mahogany trim—but step inside and the personality of the homeowners shines through at every turn.

The overarching theme of the home is a nautical one but the idea is carried out in a multitude of ways—from tranquil seaside hues and natural materials to artwork depicting dreamy water scenes to fabrics and illustrations replete with sea life. Special elements, like a taxidermy sailfish painted matte white and nautical ropes that double as design elements, add a lighthearted touch.

Antique and vintage pieces are peppered throughout the home, adding to its unique character and timeless charm. In the boy's room, mahogany beds found at the Brimfield Antiques Show are nestled beneath vintage semaphore flags that have been framed and hung as art; in the living room, metal chairs with polished frames are vintage John Salterini; and the mahogany marble top table that greets guests in the foyer is from France, circa 1830.

The elegance of the home is paired seamlessly with bright pops of Floridian color and the coastal vibe one expects to find in the Keys, where the sun meets the sea and the creative spirit reigns.



Antique mahogany beds paired with vintage semaphore flags make for the perfect boy's room.

## Style in the Sunshine State

Take an in-depth look at ten coastal residences designed by the husband-and-wife team of Taylor & Taylor. The couple applies inspiration from their global travels to private residences across Florida and beyond, blending traditional decorative themes from the region, like Mediterranean and Art Deco, with antiques from around the world and local materials and goods. The featured homes showcase the best in indoor/outdoor living and the many ways to express style in a sunny locale.

*Classic Florida Style: The Houses of Taylor & Taylor;*  
by William Taylor, Phyllis Taylor and Beth Dunlop; The Monacelli Press; \$50.





Painted Hatteras rockers take in an enviable view.





a food column by Jeanette Bronée  
with photography by Torkil Stavdal

# nourishment

A photograph of five popsicles arranged on a light-colored surface. From top-left to bottom-right, the colors are yellow, red, chocolate brown, light green, and a darker green. Each popsicle has a wooden stick and a rectangular shape with a recessed center.

Year round enjoyment

## POPSICLES

Like many others, Nordic people enjoy dessert, and though the growing season for fruit is short, we find ways to satisfy our sweet tooth



### *Why do we desire sugar?*

We tend to crave sweets when we are dehydrated, tired or stressed, as well as when we eat fast and don't chew well. Be mindful of these triggers, cravings and habits, choose nourishing food choices, and practice self-kindness to begin living the healthy lifestyle that we all deserve.

[ All recipes, except Lemonade on a Stick, are made in a blender and poured in a mold that is left in the freezer until the popsicles are frozen. ]



### DETOXER POPSICLE

Ingredients for 3 popsicles  
1 peeled grapefruit  
1/2 apple (include skin)  
1 inch of peeled turmeric root  
1/4 cup of water



### CACAO ENERGY FIX

Ingredients for 1 popsicle  
2.5 ounces of coconut milk (or however much the mold holds)  
1 teaspoon of raw cacao  
1 teaspoon of maple syrup  
Pinch of ginger or chili (as desired)



### MATCHA LATTE SOOTHER

Ingredients for 1 popsicle  
2.5 ounces of coconut milk (or however much the mold holds)  
1 teaspoon of green Matcha powder  
1/2 teaspoon of maple syrup (to taste)



### *How do we satisfy our cravings in a healthy, nourishing way?*

Many of us crave ice cream during the summer. My favorite is chocolate, so it's no surprise that I find other ways to have chocolate while still taking care of myself and my health. Popsicles are fantastic for satisfying the desire for something cool and smooth, and you can make it healthy by thinking of it as a smoothie on a stick.





## ANTIOXIDANT POPSICLES

Ingredients for 3 popsicles  
1 cup of strawberries  
1/2 cup of beets  
1/2 cup of coconut milk  
1 teaspoon of maple syrup  
1 teaspoon of grapefruit juice



## LEMONADE ON A STICK

Ingredients for 1 popsicle  
1 lemon  
1 tablespoon of honey  
1/2 cup of hot water  
Slice one-sixteenth of an inch off the center of the lemon, and cut it into two halves. Juice the rest of the lemon and add hot water to dissolve the honey. Cut the lemon slice in half and put it into the mold. Add liquid and freeze.



WIDE OPEN  
Glass exterior  
walls and interior  
partitions allow  
natural light to  
flood the entire  
space.



# SOUTH BEACH STYLE

Clean, crisp and comfortable are the keys to a seaside home in Miami

*By Jennifer Quail*  
*Photography by Troy Campbell*

**INSPIRED BY THE SEA, SKY AND SHORELINE VIEWS, DESIGNER MICHAEL WOLK**, of Michael Wolk Design Associates, devised a light and bright palette for an oceanfront townhouse in Miami Beach. Modern sensibility blends seamlessly with a reverence for the lush natural environment in this contemporary waterfront home.



The sleek kitchen offers ample space for prep work and for guests as well.



Light oak floors and neutral colored textiles and accents allow the natural surroundings to take center stage.

Beginning right at the base, the home is a reflection of the natural elements visible through its full walls of windows. Light oak flooring mimics the sand, as do textiles used in upholstery and carpets; white walls throughout allow the bright energy of the coastal location to shine in full force; and a large fish tank in the dining room brings the ocean itself inside.

The well-appointed kitchen is a sleek, modern marvel whose clean lines and palette pose no interference with the colorful view. Smooth-faced, crisp white cabinets are contrasted only by stainless steel appliances and counter seating allows for a gathering place while meals are being prepared.

At every turn in this carefully planned space, the surrounding natural environment is welcomed as the main attraction and various design decisions, notably a striking use of glass for walls, partitions, desktops, and even stair treads, allows for unobstructed immersion in the tranquil surroundings.



Echoing the blue skies that fill the windowed wall, an art series serves as a dose of color in the calm, contemporary master bedroom.



The large fish tank is a highlight in the dining area. Art work by Richard Serra and Frank Stella keep to the overall palette.



Zanotta's sculptural Cavour desk is a focal point in the office.

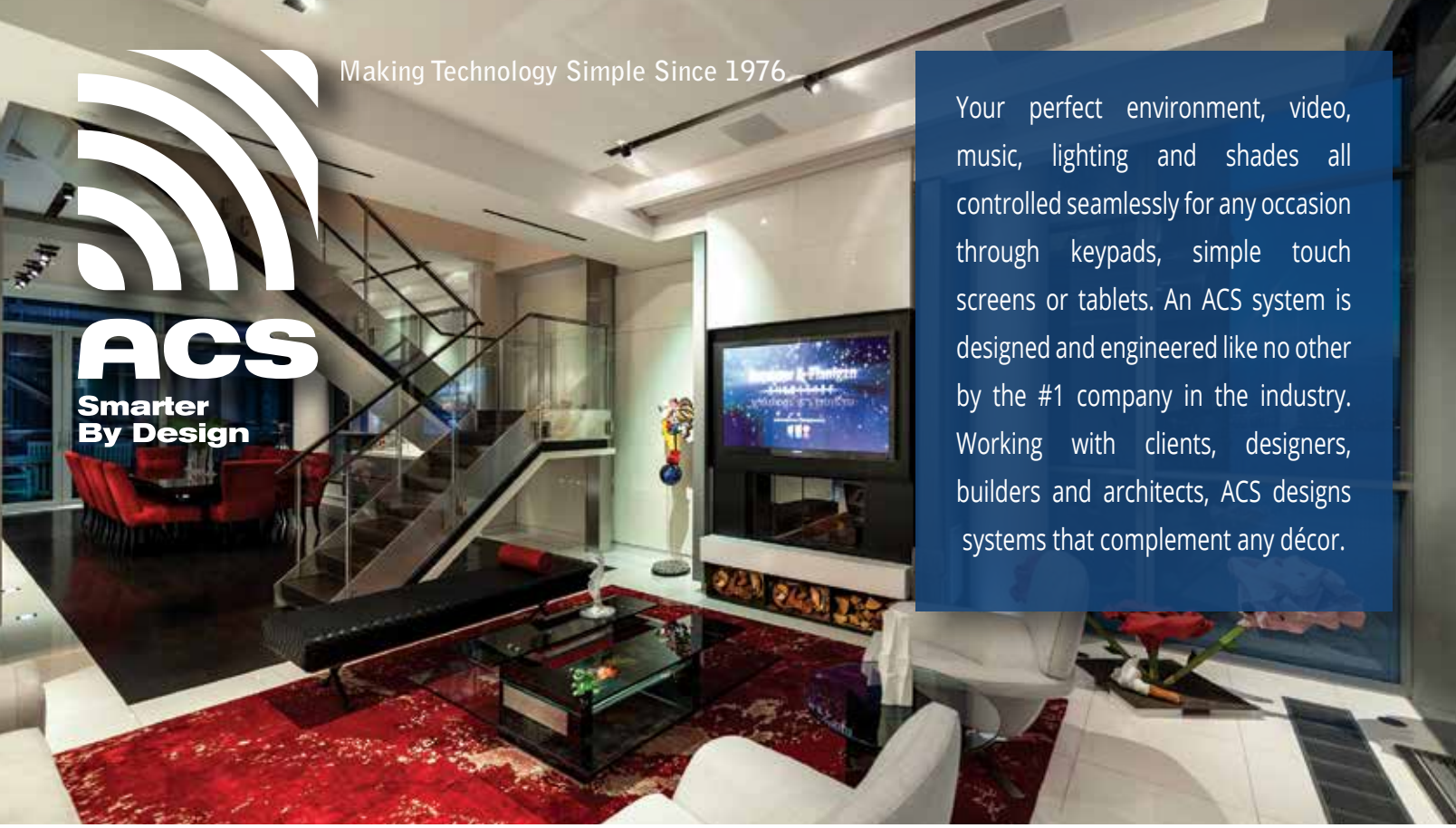


Two bathrooms were combined to create one large master bath with one spectacular view.

Making Technology Simple Since 1976



Your perfect environment, video, music, lighting and shades all controlled seamlessly for any occasion through keypads, simple touch screens or tablets. An ACS system is designed and engineered like no other by the #1 company in the industry. Working with clients, designers, builders and architects, ACS designs systems that complement any décor.



ACS features LUTRON Lighting, Shade and Environmental Solutions



NEW YORK | NEW JERSEY | FLORIDA | CALIFORNIA



Call 800.382.2939 for a FREE consultation.

Making Technology Simple Since 1976

[www.audiocommand.com](http://www.audiocommand.com)

VISIT OUR NEW HAMPTON'S DESIGN CENTER  
455 County Road 39A  
Southampton, NY 11968

Metro New York 800-382-2939  
Manhattan 212-260-4715



Audio/Video | Home Theater | Lighting Control | Motorized Shades | Home Networking



## Take your appliances for a visual test-drive.

See every Sub-Zero and Wolf product in its natural environment at The Living Kitchen. Jump-start your plans for a new kitchen. Get hands-on with the complete line of Sub-Zero and Wolf products as you move from one full-scale kitchen vignette to the next. Once you've been inspired by all that your new kitchen can be, our specialists will help you turn your dreams into a reality.

SUB-ZERO® WOLF® |  
THE LIVING KITCHEN. |



THE BRAND THAT DEFINES LUXURY  
REAL ESTATE. WORLDWIDE.



*Exclusive Affiliate of Christie's International Real Estate*  
Mercer, Monmouth, Ocean, Southern Hunterdon and Southern Middlesex Counties

*glorianilson.com*

*Gloria*  
**NILSON & co**  
REAL ESTATE

**CHRISTIE'S**  
INTERNATIONAL REAL ESTATE

Bay Head  
Middletown

Brick  
Monroe Township  
Shrewsbury

Buckingham  
Ocean Township  
South Brunswick

Holmdel  
Point Pleasant Beach  
Spring Lake

Hopewell Crossing  
Princeton  
Toms River

Keyport  
Princeton Junction  
Wall Township

Manalapan  
Robbinsville  
Washington Crossing

Mendham/Bernardsville  
Rumson







**DXV**  
AMERICAN STANDARD

ST. GEORGE COLLECTION



**DXV**  
AMERICAN STANDARD

OAK HILL SUITE

**BLACKMAN<sup>®</sup>**



CORBETT LIGHTING



NEW RAVENNA

**FAUCETS, FIXTURES,  
TILE, STONE, & LIGHTING.**

[WWW.BLACKMAN.COM](http://WWW.BLACKMAN.COM)

800-843-2695

Lakewood • Mahwah • Parsippany • Manhattan • Long Island • Southampton

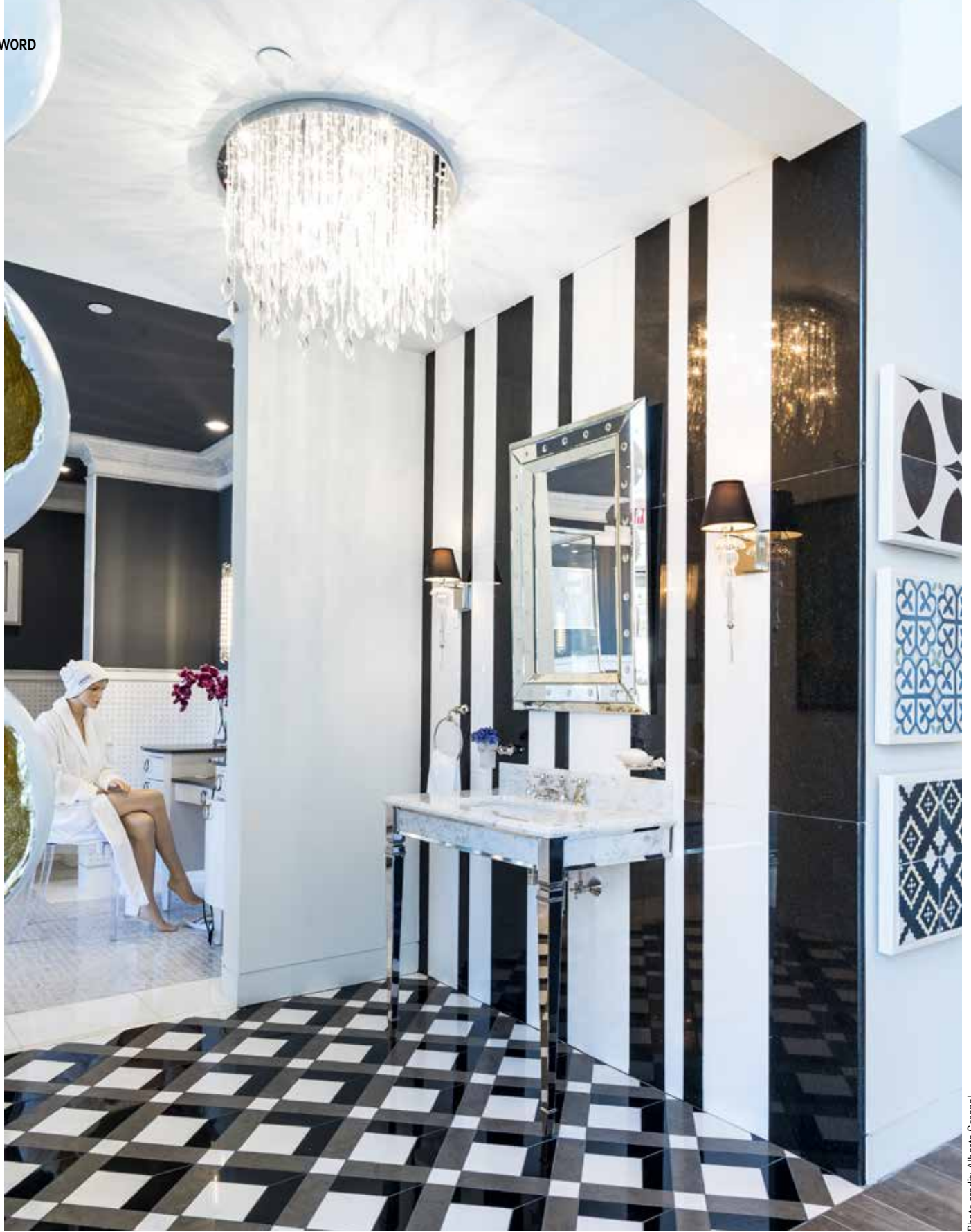


Photo credit: Alberto Coronel

**“I am going to make everything around me beautiful. That will be my life.”**

—Elsie de Wolfe



The angular lines of the Seagram® Freestanding Soaking Tub made it a dynamic focal point for their design. Behind it lies the tropical indoor/ outdoor shower, a refreshing expression of desert modernism. Bright whites, bursts of colors and organic patterns are all set off by a few rich hits of quirky fun, setting the tone for a true sense of leisure that's as timeless today as it was yesterday. Design elements that were modern, fresh and unique, and paired them with glamorous touches throughout.

Percy® Collection Faucets, Shower and Accessories  
Pop® Rectangle Vessel Lavatory  
Seagram® Wall-Hung Dual Flush Toilet  
Seagram® Freestanding Soaking Tub with Deck Contemporary Floor Mount Tub Filler

DXV  
AMERICAN STANDARD



**BLACKMAN<sup>®</sup>**



**FAUCETS, FIXTURES,  
TILE, STONE, & LIGHTING.**

[WWW.BLACKMAN.COM](http://WWW.BLACKMAN.COM)

800-843-2695

Lakewood • Mahwah • Parsippany • Manhattan • Long Island • Southampton • West Palm Beach